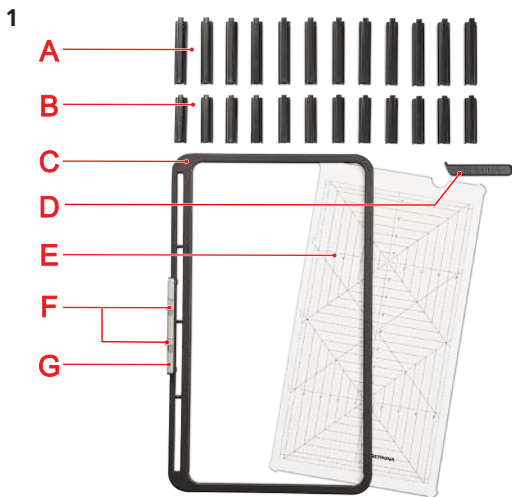




Medium Border Clamp Embroidery Hoop



Information

Scope of Delivery

- 1x Embroidery Hoop
- 1x Embroidery Template
- 12x Clamps, large
- 12x Clamps, small
- 1x Clamp Remover

Purpose

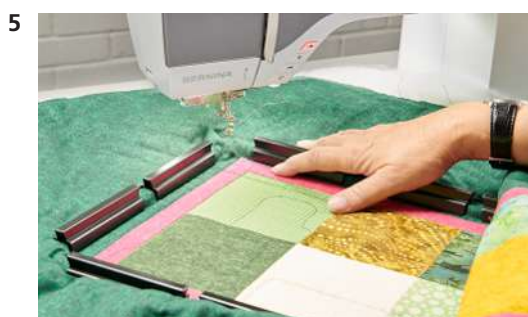
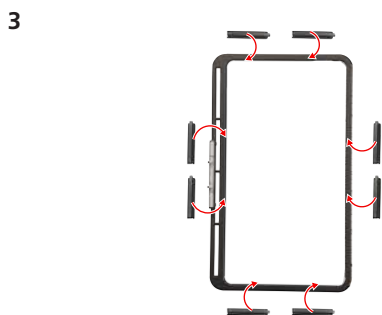
- To quilt in the hoop.
- Max. Embroidery Area: 215 x 405 mm (8.5 x 16 in)

For Your Safety

Before using this accessory, please read this instruction manual as well as the instruction manual of your machine carefully.

Overview

- A Clamps, large
- B Clamps, small
- C Hoop
- D Clamp Remover
- E Embroidery Template
 - Embroidery Area 8-Series (#26): 8.5 x 15.5" (215 x 394 mm)
 - Embroidery Area 7-Series (#26): 8.25 x 15.5" (210 x 394 mm) - limited embroidery area on the left side
 - Embroidery Area 8- and 7-Series (#43/44C): 8 x 15" (200 x 380 mm)
 - Embroidery Area 9-Series (#26): 8.5 x 16" (215 x 405 mm)
 - Embroidery Area 9-Series (#43/44): 8 x 15.5" (200 x 394 mm)
- F Push Button
- G Embroidery Hoop Connector



Application

Hooping the fabric

- > Mark the center of the quilt block on the quilt sandwich.
- > Place the quilt sandwich on the hoop.
- > Place the Embroidery Template on the quilt sandwich. Make sure that the quilt sandwich does not get distorted.
- > Align the center of the quilt block with the center of the embroidery template. (Fig. 2)
- > Press the Embroidery Template firmly onto the quilt sandwich.
- > Attach two clamps to the left side of the hoop. When doing so, attach the clamps to the hoop with a movement from the inside to the outside. (Fig. 3)
- > Attach the third and fourth clamps in the same way on the opposite side in parallel.
- > Place the fifth and sixth clamps on the top edge of the hoop. Attach the seventh and eighth clamps in parallel to the lower edge of the hoop.
- > Attach the remaining clamps to all sides. (Fig. 4)
- > Remove the embroidery template from the hoop.

Tips for Quilting

- > Depending on the sewing project, the fabric can be fixed with small and/or large clamps. We recommend using the small clamps for thicker fabrics. The large clamps make it easier to fix thin fabrics in the hoop.
- > For thin or delicate fabrics, it is recommended to use an additional layer of stabilizer between the fabric and the clamps.
- > To avoid puckering and shifting, baste the quilt sandwich together before quilting.
- > Start quilting from the center.
- > To align the quilt blocks and the quilting motifs, use the Embroidery Template. To do this, realign the clamps.
- > Aligning the embroidery design. To do this, use the function «Check Embroidery Design Size» or, if available, the «Pinpoint Placement».
- > With large and heavy quilts, make sure that the weight of the quilt is supported on both sides of the hoop while the machine is stitching.

Attaching the hoop

- > Attach the Slide-on Table so that the Embroidery Hoop does not have to be removed from the machine when the quilt sandwich needs to be rehooped.
- > Attach the hoop. Refer to the instruction manual of the machine. To do this, pass the Embroidery Hoop at one corner of the Embroidery Hoop under the needle and the presser foot or temporarily remove one clamp. (Fig. 5)
- > Make sure that there is no fabric under the Embroidery Hoop.
- > Make sure that no additional fabric from the quilt sandwich gets into the embroidery area while embroidering. With large quilts, the right edge of the quilt sandwich should be rolled up and fixed in place.
- > Before using the embroidery hoop for the first time or if the needle position and the center of the hoop do not match, calibrate the hoop in the machine settings. Refer to the instruction manual of the machine.
- > Select the embroidery hoop on the machine – ClampMB.
- > Open the embroidery design on the machine and make the desired amendments. **Please note:** Applications with CrystalWork are not suitable for this Embroidery Hoop.

6



Rehooping the Fabric

When the slide-on table is attached, the quilt sandwich can be rehooped without removing the embroidery hoop from the machine.

- > Raise the needle and presser foot.
- > Position the embroidery hoop so that there is enough space for rehooping, e.g. move the hoop in the «Hoop Indicator/Select Hoop» to the back (packing position).
- > Remove the clamps with the clamp remover. (Fig. 6)
- > Re-hoop and align the quilt sandwich. When doing so, place the embroidery template from the back of the sewing machine onto the quilt sandwich.
- > Position the clamps.

Removing the Embroidery Hoop

- > Refer to the instruction manual of the machine.